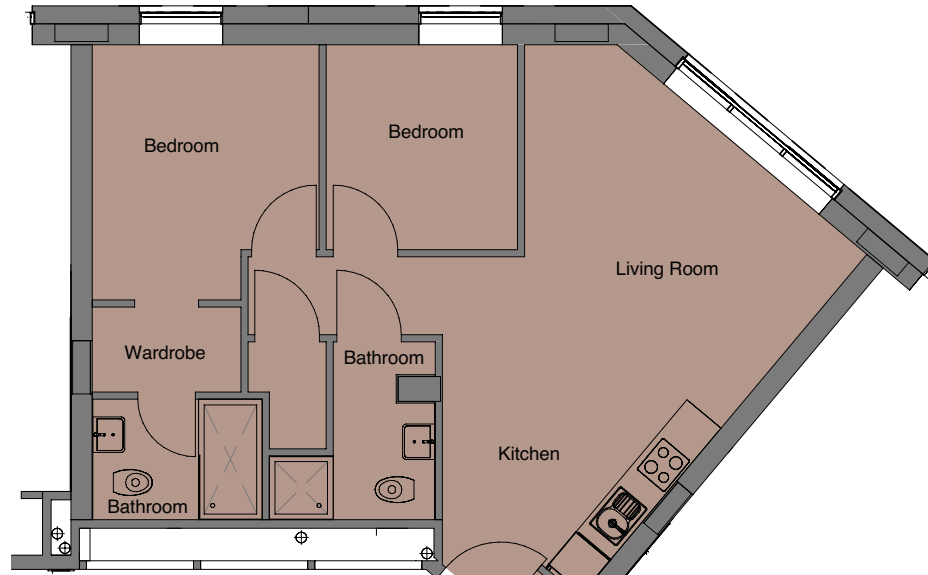


ONE VESTA STREET



2 BED - TYPE 5



THE SPECIFICATION

FLOORING:

- 18mm engineered Oak flooring to living areas and kitchen.
- Carpets to bedrooms.
- Grey porcelain tiled flooring to bathrooms.

KITCHENS BY OMEGA:

- Incorporating anthracite grey laminate base units with light grey wall units and Bellato laminate countertop and upstand.
- Omega stainless steel sink with chrome mixer tap.
- Brushed chrome switch plates, with under wall unit lighting.

APPLIANCES:

- Neff stainless steel electric oven and Neff black glass hob with chimney style extractor hood.
- Integrated CDA or freestanding Amica fridge freezer.
- Integrated CDA dishwasher.

BATHROOMS:

- White three-piece suite with thermostatic shower and Villeroy & Boch sanitaryware.
- Glass mirror and chrome heated towel rail.
- Note: 1-bedroom homes have a shower cubicle not bath.

GENERAL:

- Secured By Design solid core front door with architrave painted in Portland.
- Stainless Steel Ironmongery
- Walls and ceilings painted off white with woodwork painted in Portland.
- Mixture of LED downlights, spotlights and pendant lighting.
- White plastic switchplates.
- Heating is provided via white flat panel Dimplex Monterey radiators.



WEBSITE:
WWW.MCRLIFE.CO.UK

CONTACT RESIDE MANCHESTER ON:
0161 837 2840

Floorplans shown for the apartments and Townhouses at Vesta are for approximate measurement only. Exact layout and sizes may vary. All measurements may vary within a tolerance of 5%. Floorplans have been sized to fit the page, as a result this plan may not be the same scale as plans on other pages.